

PRE-DESIGNED MULTI FAMILY

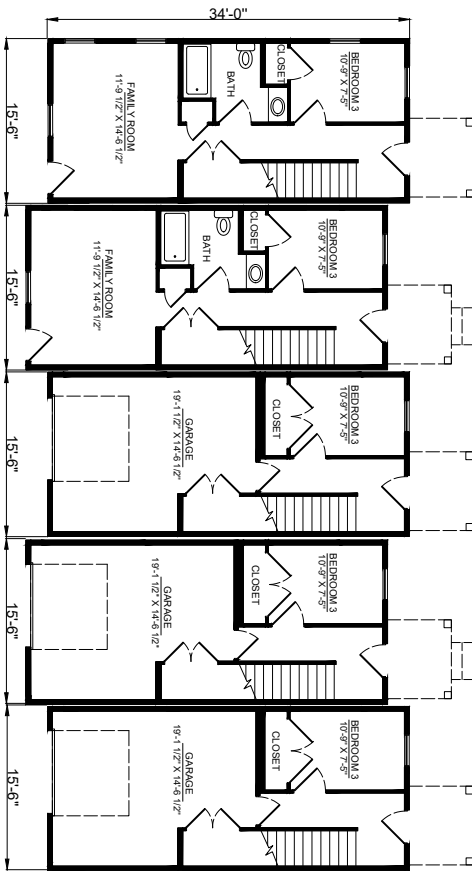
MAPLE TOWNHOME



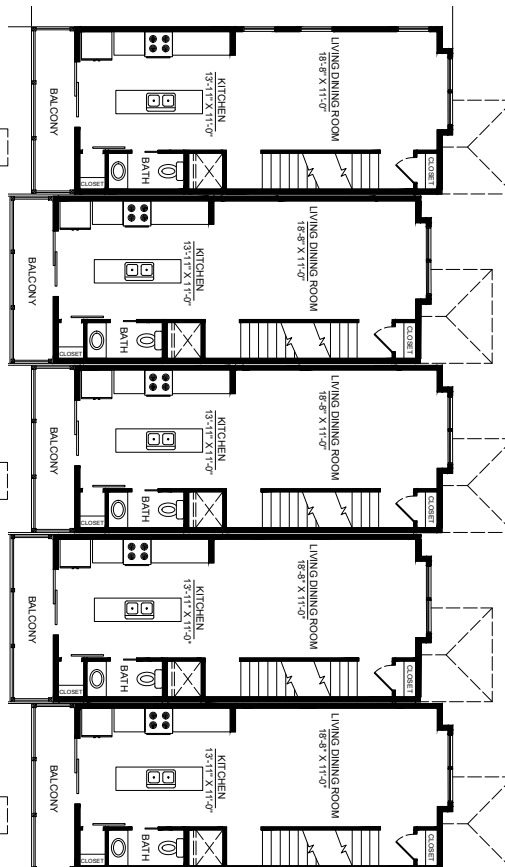
Dimensions: 15'-6" x 34'-0"
Square Feet: 1506
Stories: 3
Bedrooms: 3
Bathrooms: 3 or 4
Total Modules: 15
Price: Sales@Volumod.com for pricing
 (Available in any unit quantity)

The three-story Maple Townhome features three bedrooms and two bathrooms. With beautiful designer-chosen finishes and features, the open-concept floorplan features a large kitchen island, ample lighting, and a spacious floorplan.

First Floor (Garage Optional):



Second Floor:



Third Floor:

