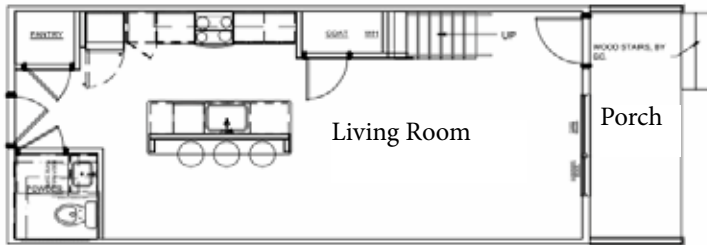


# CONFIGURABLE MULTI FAMILY

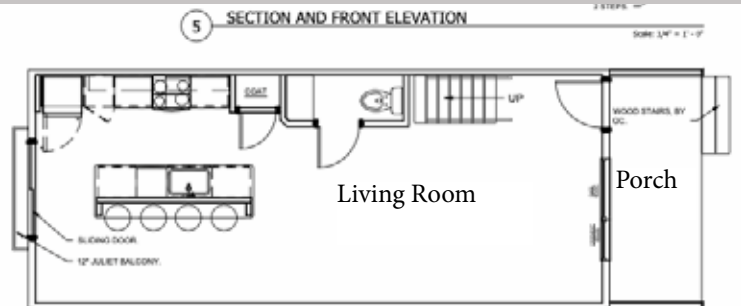
# POPLAR



Ground Floor -  
682 SF

FLOOR PLAN - 1ST FLOOR OPTION 2

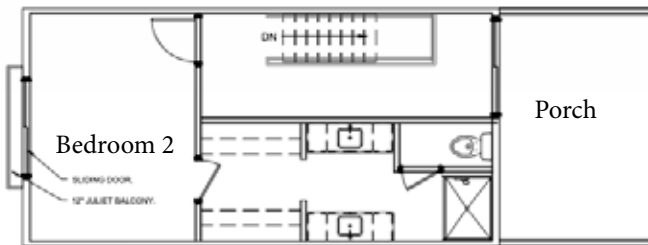
Scale: 1/4" = 1'-0"



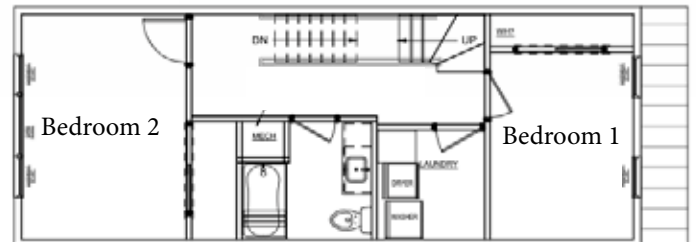
Ground Floor -  
682 SF

FLOOR PLAN - 1ST FLOOR OPTION A

Scale: 1/4" = 1'-0"



Second Floor -  
634 SF



Second Floor -  
634 SF

Our configurable multi-family product line offer the ultimate in ease, creativity and infinite site-specific designs. Configure in duplexes, triplexes, quads or more to form a distinctive multi-family community. Units can differ in bedroom and bathroom combinations and each has a distinctive look and feel for a modern vibe.



Plans created in collaboration with R3B Architecture.

